

# SONAROL

PERFECTHERM



Perfection in every detail



# PERFECTHERM SONAROL



WARM



SILENT

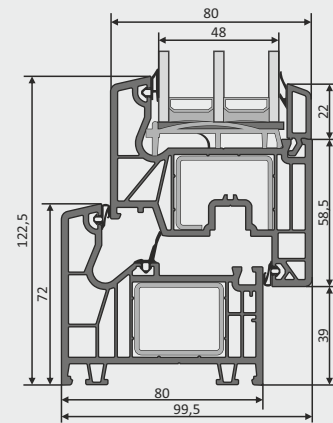


TIGHT



SAFE

Reference window heat transfer coefficient	<b>Uw = 0,78 W/m²K</b>
Profiles	class A 6-chambers
Mounting depth	80 mm frame 80 mm sash
Sealed glass unit	48 mm, Ug = 0,5 W/m²K
Gaskets	centre gaskets in the frame and in the sash
Fittings	MACO from MULTI-MATIC series anti-wind latch anti-burglary hooks sash lifter with wrong handle position

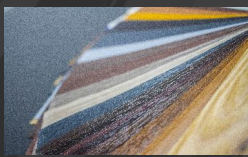


## Adjust a window to your own needs



### core color

▫ white, anthracite, carmel, brown



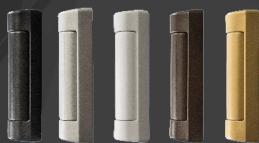
### veneer colour

▫ over 30 patterns for use on one side or both sides of the window



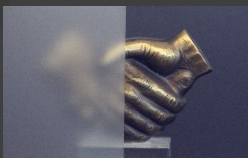
### handle type and shape

▫ various colors, shapes and types - standard, with key locking option or with locking button



### cover colour

▫ cover colour adjusted to the colour of handles and/or veneer



### glazing type and colour

▫ wide selection of glazing – frosted, anti-reflective, safe, sound-absorbing, ornamented



### extras

▫ air inlet vents: manual, pressure-based, controlled by humidity sensor  
▫ muntins: internal, Viennese, glued on, connectors, expansions

