

SONAROL

CLASICTHERM



Go with the classic style |



CLASICTHERM SONAROL



WARM



SILENT

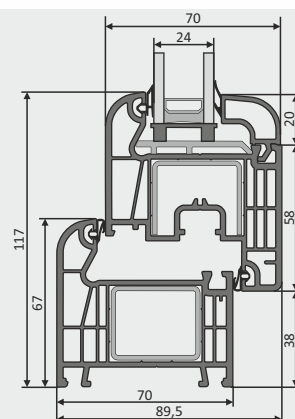


TIGHT



SAFE

Reference window heat transfer coefficient	40 mm unit - $U_w = 0,94 \text{ W/m}^2\text{K}$ 24 mm unit - $U_w = 1,4 \text{ W/m}^2\text{K}$
Profiles	6-chambers
Mounting depth	70 mm frame 70 mm sash
Sealed glass unit	40 mm, $U_g = 0,6 \text{ W/m}^2\text{K}$ 24 mm, $U_g = 1,1 \text{ W/m}^2\text{K}$
Fittings	MACO from MULTI-MATIC series anti-wind latch anti-burglary hooks sash lifter with wrong handle position



Adjust a window to your own needs



sealed glass unit

- 24 mm - double glazing
- 40 mm - triple glazing



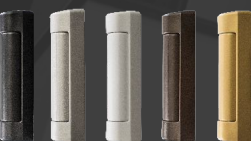
veneer colour

- over 30 patterns for use on one side or both sides of the window



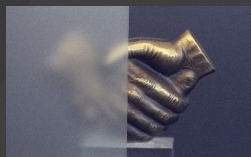
handle type and shape

- various colors, shapes and types - standard, with key locking option or with locking button



cover colour

- cover colour adjusted to the colour of handles and/or veneer



glazing type and colour

- wide selection of glazing – frosted, anti-reflective, safe, sound-absorbing, ornamented



extras

- air inlet vents: manual, pressure-based, controlled by
- humidity sensor
- muntins: internal, Viennese, glued on, connectors, expansions

